



# Separate Drive\* Rotary Vane to 16 cfm



## Oilless 2567 Series

### MODEL 2567 SERIES DUAL FUNCTION

Ideal for graphic arts applications where simultaneous vacuum and pressure are needed.

**MAX. VAC. (WITH 5 PSI BACK PRESSURE) 20" HG,  
OPEN FLOW (VAC. SIDE) 15 CFM**

#### PRODUCT FEATURES

- Oilless operation
- Dual pump performance with (1) pump/motor
- "Universal" motor included
- Rugged construction/low maintenance

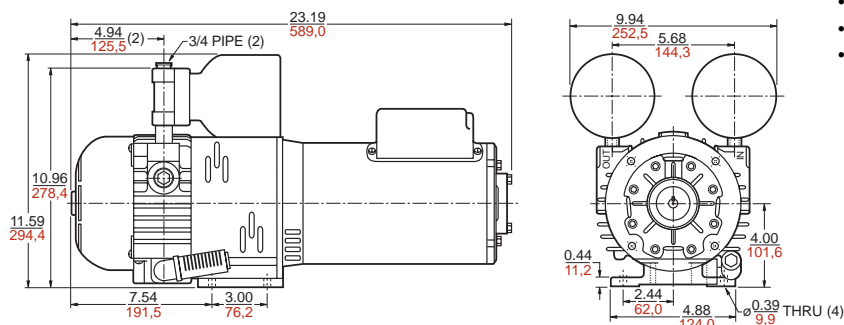
#### RECOMMENDED ACCESSORIES

- Vacuum gauge AA640
- Pressure gauge AA644B
- Repair kit K350

\*This dual function series comes with motor attached.

#### Product Dimensions (mm, inches)

Dimensions are for reference only.



#### Product Specifications

Model Number	Motor	RPM		HP (60 Hz)	kW (60 Hz)	Net Wt.	
		60 Hz	50 Hz			lbs.	kg
2567-D122-G561X	115/208-230-60-1	1725	1425	1	0,75	90	40,5
	110/200-240-50-1						
2567-D122-G471	208-230/460-60-3	1725	1425	1 1/2	1,1	90	40,5
	220/380-415-50-3						

#### Product Performance (Metric, U.S.)

