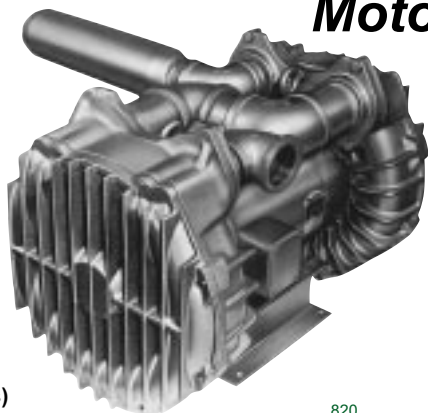




# Oiless Regenerative Blowers, Motor Mounted



## REGENAIR® R7S Series

### MODEL R7S3180M

200" H<sub>2</sub>O MAX. PRESSURE, 420 cfm OPEN FLOW (60 HZ)  
150" H<sub>2</sub>O / 11" Hg MAX. VACUUM

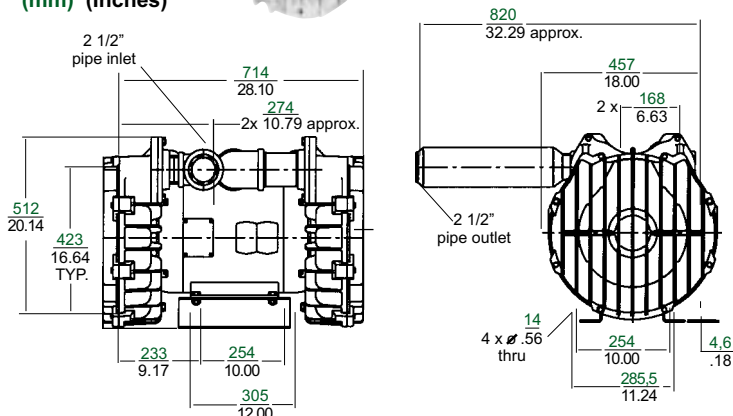
#### PRODUCT FEATURES

- Made in the U.S.A.
- Oilless operation
- UL & CSA approved motor w/permanently sealed ball bearings. Class F insulation
- Cast iron blower housing and cover. Cast aluminum impeller.
- CE compliant - Declaration of Conformity on file
- Smaller and lower cost than 2 blowers

#### RECOMMENDED ACCESSORIES

- Pressure gauge AE133A
- Inlet filter (pressure) AJ126G
- Vacuum gauge AE134
- Vacuum gauge for monitoring inlet filter restriction AJ497
- Pressure/Vacuum relief valve AG258F
- Silencer for vacuum relief valve AJ121G
- In line filter (vacuum) AJ151H
- External muffler for additional silencing AJ121G
- Moisture separator RMS400 (for vacuum line)

(mm) (Inches)



#### Product Specifications

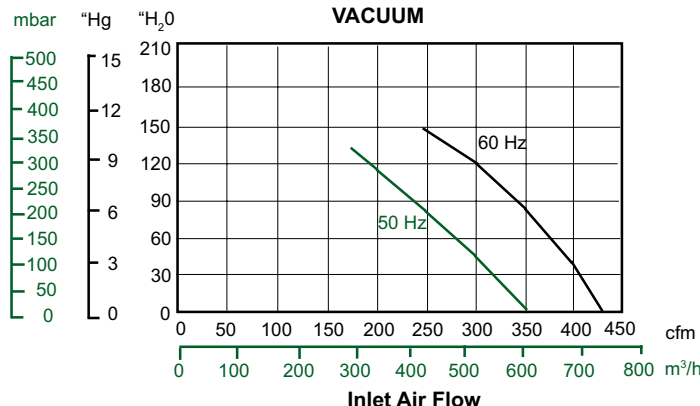
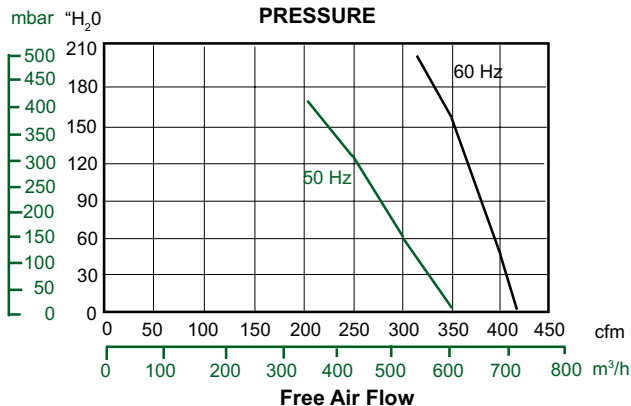
Recommended NEMA starter size for motor - 2/2

Specifications subject to change without notice

Model Number	Motor Specs	Full Load Amps	Locked Rotor Amps	HP	KW	RPM	Max Vac		Max Pressure		Max Flow		Net Wt.	
							"Hg / "H <sub>2</sub> O	mbar	"H <sub>2</sub> O	mbar	cfm	m <sup>3</sup> /h	lbs.	kg
R7S3180M	230/460-60-3	52/26	238 @ 460V	18	13.4	3500	11 / 150	374	200	498	420	714	431	195
	190-220/380-440-50-3	52-45/26-23		12	8.9	2850	9.5 / 130	324	170	423	350	595		

Note: Unit must be mounted with shaft horizontal

#### Product Performance (metric, U.S.)



Pressure vs. Air Temp Rise Over Ambient (°F)

In. H <sub>2</sub> O	60 Hz	50 Hz
0	25	19
20	35	29
40	48	41
60	61	53
80	74	66
100	87	81
120	101	98
140	116	117
160	133	140
180	153	-
200	177	-

Pressure vs. K Watts Input

In. H <sub>2</sub> O	60 Hz	50 Hz
0	4.8	2.9
20	5.2	3.9
40	7.3	4.9
60	8.6	6.0
80	9.8	7.1
100	11.2	8.1
120	12.6	9.1
140	13.8	10.2
160	15.0	11.3
180	16.3	-
200	17.7	-

Vacuum vs. Air Temp Rise Over Ambient (°F)

In. H <sub>2</sub> O	60 Hz	50 Hz
0	25	15
20	37	28
40	49	41
60	64	58
80	82	76
100	104	100
120	131	134
130	149	155
150	186	-

Vacuum vs. K Watts Input

In. H <sub>2</sub> O	60 Hz	50 Hz
0	4.7	2.9
20	5.8	3.8
40	6.9	4.7
60	8.0	5.7
80	9.1	6.6
100	10.2	7.5
120	11.0	8.4
140	12.1	-
150	12.6	-